

nstruc

▽ J
▽ S
H
H
▽ V
▽ S
H
H
▽ Y
N

[12 pts]

1. Solve

(a)

(b)

(c)

x

[3 pts]

2. 9

2/8

[8 pts]

3. F

W16

[4 pts]

m
m

[4 pts]

α
m
m
 α'

[4 pts]

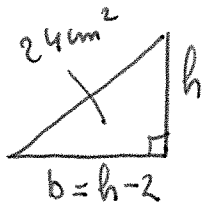
6. Solve the linear system $\begin{cases} 2x \\ 3x \end{cases}$

+

Take

Solution:

[4 pts]

7. The base of a right triangle is
Find the lengths of the base

The length of the b

W

[8 pts]

0

[4 pts] 9. Simplify, expressing the result with positive exponents.

$$\left(\frac{2^3 a^{-2} \sqrt{b}}{2^{-2} a^4 b^{-5/2}} \right)$$

[4 pts] 10. Rationalize the denominator and simplify.

$$\frac{(2 - \sqrt{10})(5\sqrt{2} + 2\sqrt{10})}{(2 - \sqrt{10})(2 + \sqrt{10})}$$

11. The cost, y , of
costs \$9,280 to

[4 pts]

(a) Find the lin

$$\begin{array}{r} 928 \\ - 590 \\ \hline 337 \end{array}$$

a

Take $a = 10$

$$\begin{array}{r} 928 \\ 928 \\ - 900 \\ \hline 270 \end{array}$$

[2 pts]

(b) How much

$$x = 10$$

$$y = 45$$

$$y = 47$$

It costs

[2 pts]

(c) What is the

The cos

W16 20

[8 pts]

12. |

[4 pts]

13. |

S

S

P

[12 pts] 15. Consider the f

(a) State the

Don

Don

(b) Evaluate

(c) Evaluate

gl

[4 pts]

16.

[4 pts]

17. T
a

Supplementary / draft page